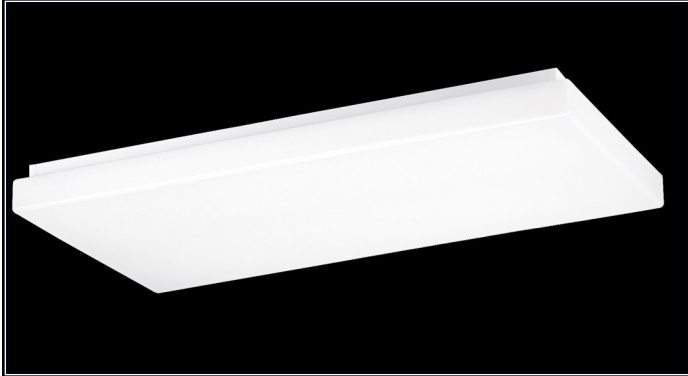


<b>Catalog No.</b>	<b>Type:</b>
<b>Job Name:</b>	

# 5100 Series

## Square Edged Cloud



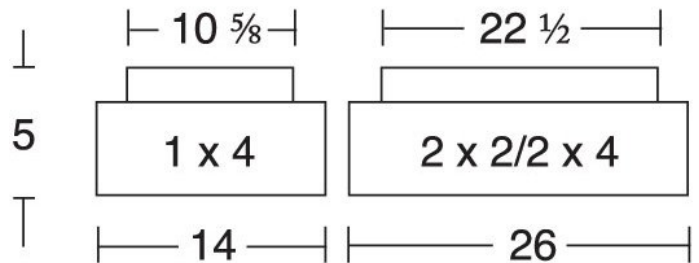
### General Characteristics:

Lamp Type: 2 or 4 lamp T8 or T5  
 Ballast type: Electronic Ballast  
 Standard Voltage: Universal 120-277  
 Options: Dimming Ballast, Emergency  
 Ballast, With Lamps  
 Mounting: Ceiling Mount  
 Additional Info.: UL Listed & Title 24 Compliant

### Features & Specifications:

The 5100 series is a contemporary square edged cloud with white acrylic diffuser. The innovative design of the 5100 Series provides a shallow, fully luminous light source.

- High impact acrylic diffuser
- White diffuser creates soft uniform illumination
- Housing is made of cold rolled steel
- Spot welded for rigidity and durability
- White polyester polymer with a minimum of 82% reflectivity
- Diffuser lifts and shifts from either side for easy re-lamping
- Suitable for damp location



Catalog Ordering: Example: 5124-428/2-UNV-WL

<b>51</b>				
-----------	--	--	--	--

FAMILY TYPE	SIZE- LAMPING	# OF BALLASTS	BALLASTS/ VOLTAGE	OPTIONS
51	12-217 (2- F17T8)	/1	UNV (120-277 Volt)	EMR (450 Lumen Emergency Ballast)
	12-214 (2- F14T5)	/2	DIM (Dimming Ballast)	EMR 1400 (1400 Lumen Emergency Ballast)
	12-224 (2- F24T5HO)			WL (With Lamps)
	14-232 (2- F32T8)			
	14-228 (2- F28T5)			
	14-254 (2- F54T5HO)			
	22-232 (2- F32T8-U6)			
	22-414** (4- F14T5)			
	22-424** (4- F24T5HO)			
	24-432 (4- F32T8)			
	24-428** (4- F28T5)			
	24-454 (4- F54T5HO)			

\*\* Indicates 2 or more ballasts required

**Specifications and Dimensions Subject to change without notice**

FSC Lighting 9120 Center Avenue, Rancho Cucamonga, CA 91730 Ph 909-948-8878 Fax 909-948-8510