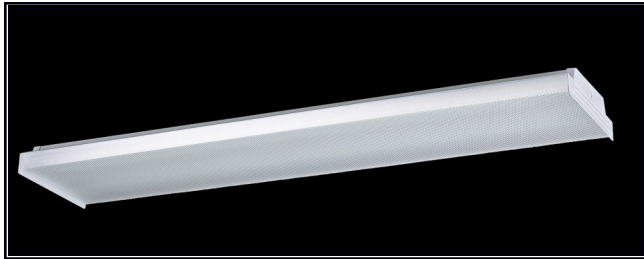


5600 Series

Steel Wraparound



General Characteristics:

Lamp Type: T8/ T5 Linear Fluorescent or LED
 Ballast Type: Electronic Ballast
 Standard Voltage: 120 (Universal 120-277 optional)
 Options: Dimming Ballast, Emergency Ballast, Black Housing, With Lamps
 Mounting: Surface
 Additional Info.: UL Listed & Title 24 Compliant



-10 -20 -40 -50 -60

Catalog Ordering: Example: 5648-432/2-UNV



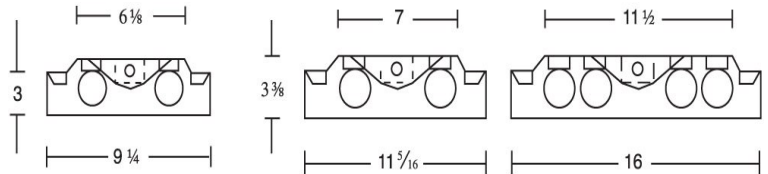
FAMILY TYPE	LENGTH / LAMPING	WIDTH	# OF BALLAST	VOLTAGE	OPTIONS
56	23-217 (2-F17T8)	9 1/4"	/1	120 (120 Volt)	DIM (Dimming Ballast)
	24-217 (2-F17T8)	11 5/16"	/2	UNV (120-277 Volt)	EMR (450 Lumens Emergency Ballast)
	24-214 (2-F14T5)	11 5/16"	/3		EMR 1400 (1400 Lumen Emergency Ballast)
	24-224 (2-F24T5HO)	11 5/16"	/4		WL (With Lamps)
	25-417 (4-F17T8)	16"			WE (Wood Ends)
	25-414** (4-F14T5)	16"			-10 (Unfinished)
	25-424** (4-F24T5HO)	16"			-20 (White Washed)
	36-225 (2-F25T8)	11 5/16"			-40 (Golden Oak)
	36-221 (2-F21T5)	11 5/16"			-50 (Dark Oak)
	36-239 (2-F39T5HO)	11 5/16"			-60 (Red Oak)
	37-425 (4-F25T8)	16"			BLK (Black Housing)
	37-421** (4-F21T5)	16"			
	37-439** (4-F39THO)	16"			
	46-232 (2-F32T8)	7 3/4"			
	47-232 (2-F32T8)	9 1/4"			
	48-232 (2-F32T8)	11 5/16"			
	48-228 (2-F28T5)	11 5/16"			
	48-254 (2-F54T5HO)	11 5/16"			
	49-428** (4-F28T5)	16"			
	49-454 (4-F54T5HO)	16"			
	49-432 (4-F32T8)	16"			
	72-225T** (4-F25T8)	11 5/16"			
	73-425T** (8-F25T8)	16"			
	96-232T (4-F32T8)	11 5/16"			
	97-432T** (8-F32T8)	16"			

Catalog No.	Type:
Job Name:	

Features & Specifications:

The 5600 Series is a functional multi-purpose wrap-around that incorporates premium performance and construction durability. This series can be installed using various mounting methods and numerous options and accessories are available. The 5600 Series can be the illumination solution in commercial, industrial and residential applications. Ideal for warehouses, garages, utility rooms, and production lines.

- Housing is die-formed heavy-gauge steel with side flanges for extra uniformity and rigidity
- Ballast cover easily snaps into housing to cover ballast and wires
- Socket Plates are slide on for easy wiring
- Finished in white polyester polymer with a minimum of 82% of reflectivity
- Diffuser is Snapped in for easy servicing and hinge from either side (6' and 8' units require two individual diffusers joined with a plastic strap)
- Prismatic Lens
- Available with wood ends (color chart available to the left)
- Suitable for damp location



** Indicates 2 or more ballasts required

Specifications and Dimensions Subject to change without notice

FSC Lighting 9120 Center Avenue, Rancho Cucamonga, CA 91730 Ph 909-948-8878 Fax 909-948-8510

Revised 1/14/14

