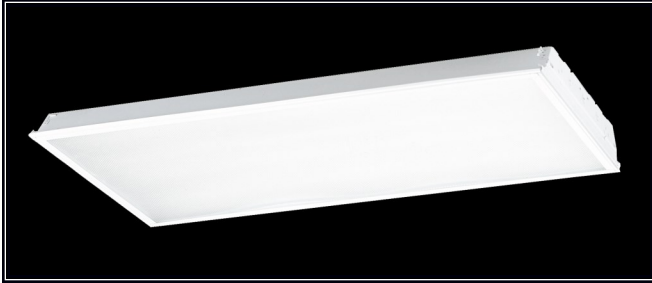


<b>Catalog No.</b>	<b>Type:</b>
<b>Job Name:</b>	

# 7400 Series

## Troffer for T-Bar



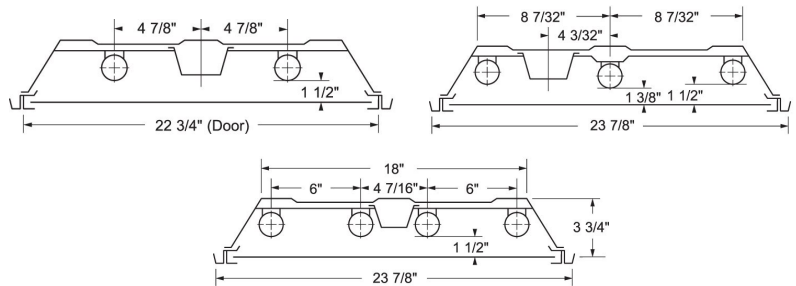
### General Characteristics:

Lamp Type: 2, 3 or 4 Lamps T5 or T8  
 Ballast Type: Electronic Ballast  
 Standard Voltage: Universal 120-277  
 Options: Dimming Ballast, Emergency Ballast, 1/2" Parabolic Louver, 1 1/2" Parabolic Louver, Aluminum Reflector, with Lamps, Smooth Clear Acrylic Lens, Wire Guard  
 Mounting: Recessed  
 Additional Info: UL Listed & Title 24 Compliant

### Feature & Specifications:

Framed troffer with clear prismatic acrylic diffuser for T-Bar ceilings. Hinged and flush mounted metal door frame for quick and easy maintenance. Several Parabolic louver options are also available.

- Housing is die-formed 20 gauge steel with rounded side flanges for safe handling
- White polyester polymer with a minimum of 82% reflectivity
- Socket plate and ballast cover snap in without tools for easy installation
- Access plate snaps in for simple ballast lead hook up without removing door or ballast cover
- Available in a variety of lamp configurations
- Suitable for damp location



### Catalog Ordering: Example: 7424-232-MVPSN

<b>74</b>				
-----------	--	--	--	--

FAMILY TYPE	DIMENSIONS/ LAMPING	# OF BALLASTS	BALLAST/ VOLTAGE	OPTIONS
74	14-232 (2-F32T8)	/1	UNV (120-277 Volt)	EMR (450 Lumen Emergency Ballast)
	22-232-U6 (2- F32T8-U6)	/2	DIM (Dimming Ballast)	EMR 1400 (1400 Lumen Emergency Ballast)
	22-217 (2- F17T8)			WL (With Lamps)
	22-317 (3- F17T8)			P1 (1/2 Parabolic Louver)
	22-417 (4- F17T8)			P2 (1 1/2 Parabolic Louver)
	24-232 (2- F32T8)			AR (Aluminum Reflector)
	24-332 (3- F32T8)			SCA118 (Smooth Clear Acrylic .118 Thick)
	24-432 (4- F32T8)			SCA080 (Smooth Clear Acrylic .080 Thick)
	14-228 (2- F28T5)			M (Miro4 Reflector)
	14-254 (2- F54T5HO)			WG (Wireguard)
	22-214 (2- F14T5)			FL (Flange)
	22-224 (2- F24T5HO)			
	24-328 (3- F28T5)			
	24-428 (4- F28T5)**			
	24-354 (3- F54T5HO)			
	24-454 (4- F54T5HO)			

\*\* Requires 2 Ballasts

Specifications and Dimensions Subject to change without notice

FSC 9120 Center Ave. Rancho Cucamonga, CA 91730 Ph 909-948-8878 Fax 909-948-8510

Revised 1/17/14



# 7400 Series

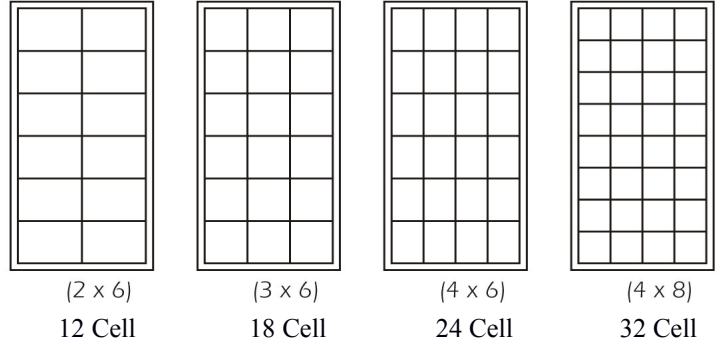
Troffer for T-Bar– Deep Cell Louver Options



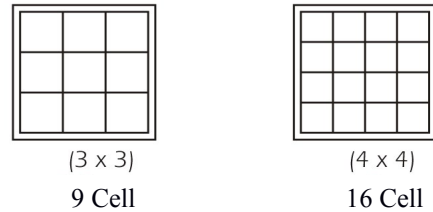
Catalog No.	Type:
Job Name:	

## CELL CONFIGURATIONS

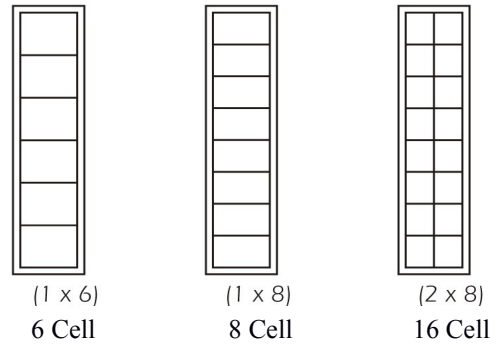
### 2' x 4' Panel



### 2' x 2' Panel



### 1' x 4' Panel



PART NUMBER	NOMINAL SIZE	NUMBER OF CELLS	CELL CONFIGURATION
14-6SSS	1' x 4'	6	1 ROW of 6
14-8SSS	1' x 4'	8	1 ROW of 8
14-16SSS	1' x 4'	16	2 ROWS of 8
22-9SSS	2' x 2'	9	3 ROWS of 3
22-16SSS	2' x 2'	16	4 ROWS of 4
24-12SSS	2' x 4'	12	2 ROWS of 6
24-18SSS	2' x 4'	18	3 ROWS of 6
24-24SSS	2' x 4'	24	4 ROWS of 6
24-32SSS	2' x 4'	32	4 ROWS of 8

Specifications and Dimensions Subject to change without notice

FSC 9120 Center Ave. Rancho Cucamonga, CA 91730 Ph 909-948-8878 Fax 909-948-8510