

8600 Series

Industrial Strip With Reflector



General Characteristics:

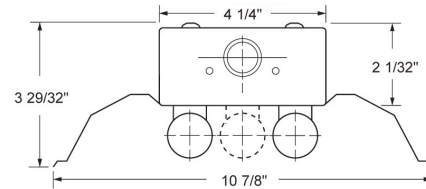
Lamp Type: 1, 2, 3 4 and 6 Lamp T5 or T8
 Ballast Type: Electronic
 Standard Voltage: Universal 120-277
 Options: Dimming Ballast, Emergency Ballast, 6' SJT Cord and Plug, Aluminum Reflector, Wireguard, With Lamps, 6' L7 Twist Lockcord
 Mounting: Surface or Suspended
 Additional Info: UL Listed & Title 24 Compliant

Catalog No.	Type:
Job Name:	

Features & Specifications:

The 8600 Series is a functional multi-purpose industrial strip that incorporates premium performance and construction durability. This series can be installed using various mounting methods and numerous options and accessories are available. The 8600 Series can be the illumination solution in commercial, industrial and residential applications. Ideal for warehouses, garages, utility rooms, and production lines.

- T8 or T5 industrial strip available in a large variety of configurations
- Mounted individually or in continuous rows
- Housing is pre-painted stamped steel
- Numerous knockouts for ease of installation
- White polyester polymer with a minimum of 82% reflectivity
- Suitable for damp location



Catalog Ordering: Example: 8648-232-MVN

--	--	--	--	--	--

FAMILY TYPE	LENGTH IN INCHES/ LAMPING	# OF BALLAST	BALLAST/ VOLTAGE	OPTIONS
86	24-117 (1- F17T8)	/1	UNV (120-277 Volt)	WL (With Lamps)
	24-217 (2- F17T8)	/2	MVL (Instant Start Multi- Volt Low)	PLG-277 (6' L7 Twist Lockcord)
	24-317 (3- F17T8)		MVN (Instant Start Multi- Volt Normal)	EMR (450 Lumen Emergency Ballast)
	48-132 (1- F32T8)		MVH (Instant Start Multi- Volt High)	EMR 1400 (1400 Lumen Emergency Ballast)
	48-232 (2- F32T8)		MVPSL (Multi- Volt Program Start- Low)	PLG (6' SJT Cord & Plug)
	48-332 (3- F32T8)		MVPSN (Multi- Volt Program Start- Normal)	WG (Wireguard)
	96-132T (2- F32T8)		MVPSH (Multi-Volt Program Start- High)	ALM (Aluminum Reflector)
	96-232T (4- F32T8)		DIM (Dimming Ballast)	
	96-332T (6- F32T8)		SDIM-73233 (GE 60% Step Dimming for Two T8)	
	96-T8-EL (2- F96T8)*		SDIM-51496 (Osram 50% Step Dimming for 2 T5 Lamps)	
	96-EL-T12 (2- F96T12)*		480 (480 Volt)	
	96-T8-EL-HO (2- F96T8HO)*		480SD (480 Step-Down)	
	96-T12-EL-HO (2- F96T12HO)*			
	24-114 (1- F14T5)			
	24-214 (2- F14T5)			
	24-314 (3- F14T5)			
	24-124 (1- F24T5HO)			
	24-224 (2- F24T5HO)			
	24-324 (3- F24T5HO)			
	48-128 (1- F28T5)			
	48-228 (2- F28T5)			
	48-328 (3- F28T5)			
	48-154 (1- F54T5HO)			
	48-254 (2- F54T5HO)			
	48-354 (3- F54T5HO)			
	96-128T (2- F28T5)			
	96-228T (4- F28T5)			
	96-328T (6- F28T5)			
	96-154T (2- F54T5HO)			
	96-254T (4- F54T5HO)			
	96-354T (6- F54T5HO)			

* Not available with Dimming Ballast

Specifications and Dimensions Subject to change without notice

FSC Lighting 9120 Center Ave. Rancho Cucamonga, CA 91730 Ph 909-948-8878 Fax 909-948-8510