

Project	
Type	
Notes	
Catalog No.	
Date	

L7600 Series LED Vaportite (PCB)

The L7600 LED Vaportite is designed to minimize horizontal surfaces and latch pockets prone to retaining debris. Perfect for applications requiring wash-ability and hose down.



Specifications

Applications

- Food Processing
- Cold Storage/ Freezers
- Car Washes
- Canopies
- Parking Garages
- Laundry Facilities
- Distribution Centers
- Stairwells
- Corridors

Construction

- Frosted acrylic smooth lens
- Poured in place gasket and cam latches seal enclosures from most hostile environments
- Standard with stainless steel mounting brackets

Mounting

- Various mounting options available, including suspension, pendant, and surface mount. Mounting brackets included. Cord and plug options offered.

Options

- Sensors can be integrated for additional energy savings
- UV Stabilized polycarbonate lens
- Emergency battery back-up
- 1/2" & 3/4" Pendant Mount hubs w/ access hole
- Bail hook
- Stainless steel latches

Warranty

- Five-year warranty.* Terms and Conditions Apply. See warranty documentation for more information.

Certification

- ETL Compliant
- Adheres to LM79, LM80 and TM21 industry standards
- DesignLights Consortium® (DLC) qualified
- Lighting Facts
- RoHS Compliant, NSF, IP65, IP66 & IP67 Rated



L76			
------------	--	--	--

Family Type	Length in Inches/Wattage	Color Temperature	Options
L76	24 - 25W (2 Foot, 28 Watt/ 3,844 lms)	40K (4000 Kelvin Temp)	OSW (Wet Location Occupancy Sensor)
	48 - 25W (4 Foot, 28 Watt/ 3,852 lms)	50K (5000 Kelvin Temp)	OSM (IRTEC LMS109 Microwave Occ Sensor w/ Photocell)
	48 - 40W (4 Foot, 40 Watt/ 6,278 lms)		OSDW (Wet Location Occupancy Sensor w/ Daylight)
	48 - 60W (4 Foot, 61 Watt/ 8,326 lms)		PRGOS-LO (IRTEC LOD509 Bi-Level Occ Sensor w/ Photocell)
	96 - 50W (8 Foot, 56 Watt/ 7,704 lms)		PRGOS-LR (IRTEC LRD509 Programmable Occ Sensor w/ Remote Control)
	96 - 80W (8 Foot, 80 Watt/ 11,730 lms)		PRGOS-LM (IRTEC LMD109 Microwave Bi-Level Occ Sensor w/ Photocell)
	96 - 120W (8 Foot, 122 Watt/ 16,652 lms)		EMR (Emergency Battery)
			480SD (480 Step-Down)
			PLG (6' SJT Cord & Plug)
			10GL (10' Loop w/ Gripple Hanging Kit)
			HUB12 (1/2" Pendant Mount HUB w/ access hole)
			HUB34 (3/4" Pendant Mount HUB w/ access hole)
			PC (Polycarbonate Lens)
			SSL (Stainless Steel Latches)
			BH (Bail Hook)

Specifications and Dimensions subject to change without notice. Contact factory for updates: (909) 948-8878

Safety Warning

FOR YOUR SAFETY, READ AND FOLLOW ALL INSTRUCTIONS TO PREVENT ELECTRIC SHOCK OR FIRE

- **INSTALLATION REQUIRES KNOWLEDGE OF LIGHTING LUMINAIRE ELECTRICAL SYSTEMS**
Contact qualified electrician prior to installation.
- **DISCONNECT POWER BEFORE INSTALLATION**
- **DO NOT ALTER PRE-EXISTING HOLES OR DRILL NEW HOLES**
- **CHECK FOR INCLOSED WIRING COMPONENTS PRIOR TO DRILLING**
Luminaire wiring, ballasts, power supplies or other electrical parts may be damaged.
- **USE ONLY ON COMPATIBLE LUMINAIRES**
Installation requires specific dimensions and construction features.
- **PROTECT WIRING FROM ABRASION**
Do not expose wiring to sharp objects or edges of sheet metal.

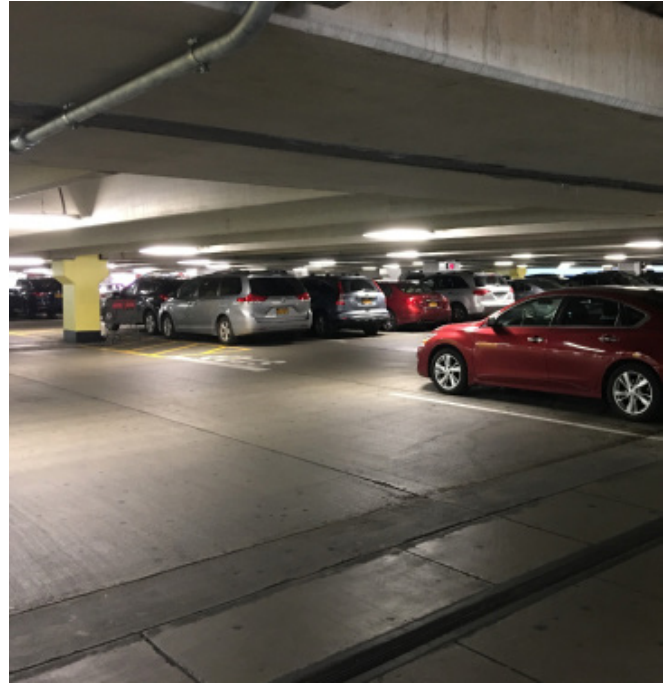
Installation Instructions

1. Disconnect Power to the circuit supplying power to the fixture
2. Removed the existing lamps and fixture
3. Disassemble new fixture to allow access to the LED Driver
4. Run existing power supply wires into fixture through fixture knock-out or end plug on fixture
5. Mount the fixture to surface, or hang fixture with appropriate fixture mounting hardware or install fixture in T-bar Ceiling (Be sure to follow local building codes for the appropriate fixture installation methods.)
6. Connect power supply wires to supplied wire disconnect to provide power to fixture
7. Re-assemble fixture
8. Re-connect power and check installation

Technical Information

Available CCT	40K & 50K
CRI	83+
Delivered Lumens	See Performance Data
Dimming	0-10V Dimming Standard
Efficacy	136+ LPW
Input Frequency	50/60 Hz
L70	113,000
IP Ratings	IP65, IP66 & IP67
Light Source	LED Board
Power Factor	> 0.95
Power Source	LED High Efficiency Power Supply
Rated Wattage	See Performance Data
Temperature Rating	-40°C – 45°C Ambient
THD	< 20%
Voltage	120V to 277V

Application Photo



Performance Data

Lens Type	Form Factor	Catalog No.	Rated Wattage (W)	Tested Wattage (W)	5000K	
					Delivered Lumens (lm)	Efficacy (lm/W)
Frosted Lens	2'	L7624-25W-50K	25	28	3,844	137
		L7648-25W-50K	25	28	3,852	138
	4'	L7648-40W-50K	40	40	6,278	156
		L7648-60W-50K	60	61	8,326	136
		L7696-50W-50K	50	56	7,704	138
	8'	L7696-80W-50K	80	80	11,730	147
		L7696-120W-50K	120	122	16,652	136

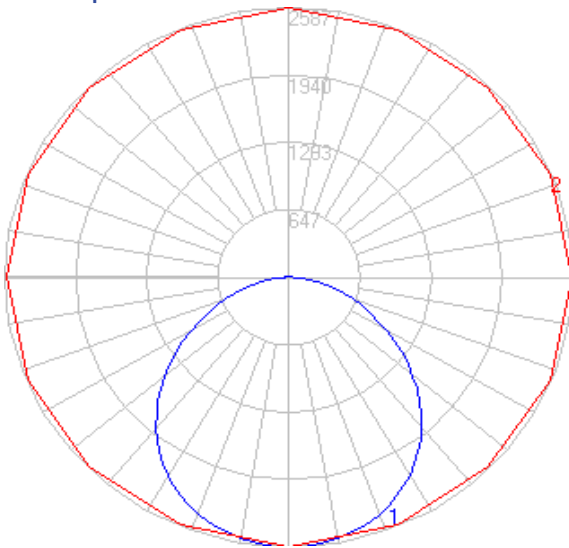
Photometric Data

L7648-60W-50K Tested in accordance to IESNA LM-79

Zonal Lumen Summary

Zone	Lumens	% Luminaire
0-10	244.03	3.03%
10-20	701.87	8.73%
20-30	1,073.43	13.35%
30-40	1,309.09	16.28%
40-50	1,373.67	17.08%
50-60	1,255.50	15.61%
60-70	977.39	12.15%
70-80	616.02	7.66%
80-90	293.25	3.65%
90-100	116.43	1.45%
100-110	48.20	0.59%
110-120	21.00	0.26%
120-130	8.68	0.11%
130-140	2.19	0.03%

Polar Graph

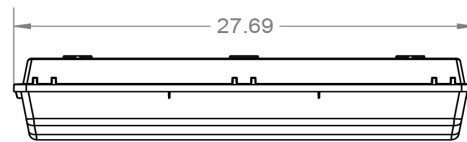


Physical Characteristics

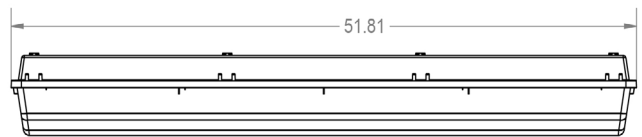
Dimensions

Version	H	L	W
2FT	4.19"	27.69"	6.77"
4FT	4.19"	51.81"	6.77"
8FT	4.19"	100.00"	6.77"

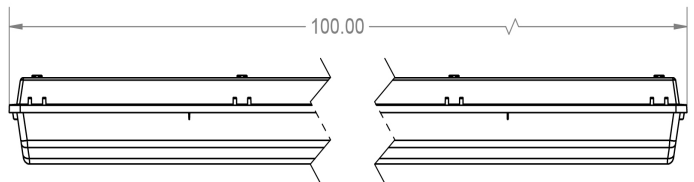
2FT Version



4FT Version



8FT Version



Weights

Version	Weight
2FT	6lbs
4FT	12lbs
8FT	23lbs